

**Sondra Wilson**  
**for Iowa Governor**



## **PILLAR I — INFRASTRUCTURE**

# **Civilian Restoration Corps**



*Concept Seal —  
Open for Collaboration*

**Rebuilding Iowa's infrastructure.  
Restoring opportunity for every resident.**

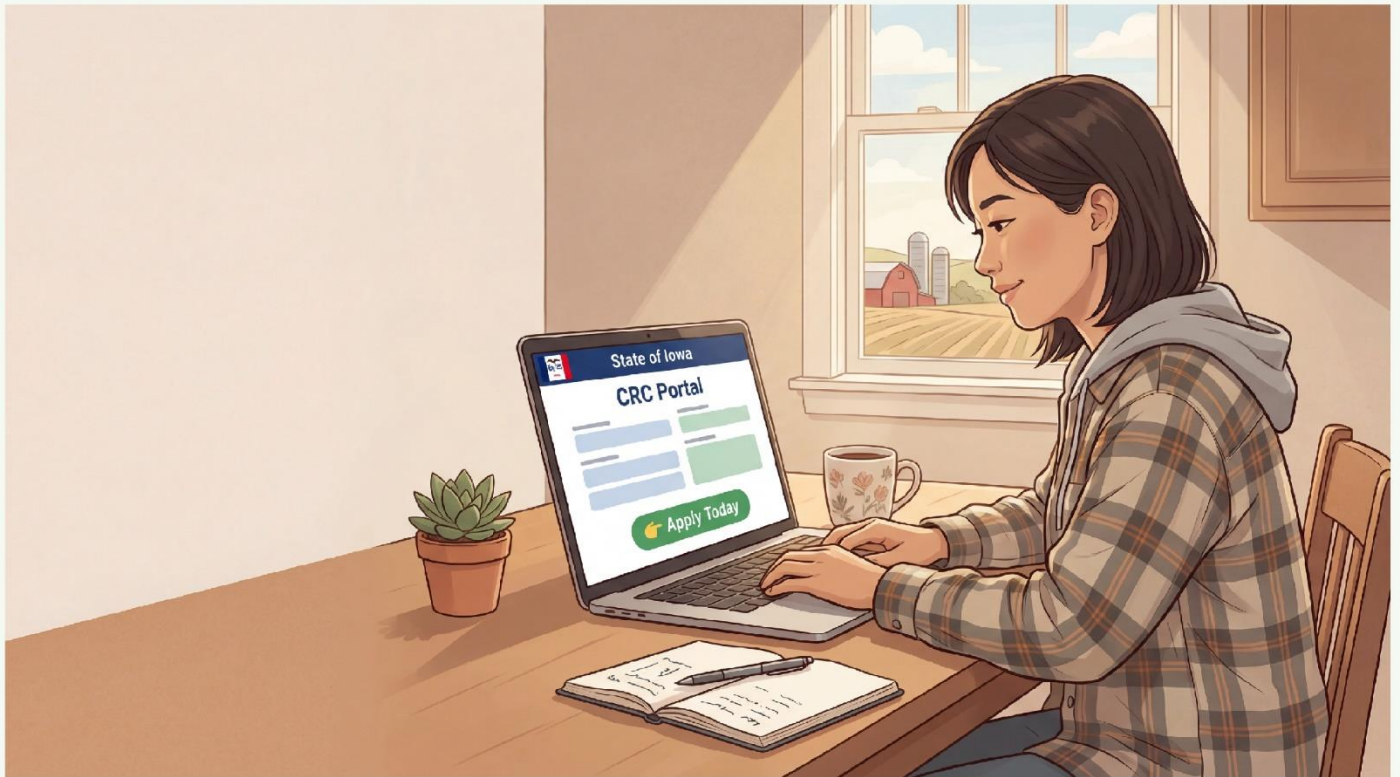
- ★ Fix roads and bridges statewide
- ★ Install clean water systems that work for farmers
- ★ Build food & herbal medicine community gardens
- ★ Strengthen Iowa farms through practical initiatives

What does this mean for you? →

# What the CRC Delivers for Iowans

---

**Real Jobs. Real Infrastructure. A Stronger Iowa.**



**100,000+ Jobs — Launching through the CRC Portal**

---

**Choose from 10 infrastructure-building initiatives:**

- ✓ **High-paying, stable jobs**
  - ✓ **Excellent benefits and training**
  - ✓ **Work that strengthens your community**
- 

**The CRC becomes a reality  
when Iowans elect Sondra Wilson for Governor.**



# How the CRC is Structured and Governed

---

6 Legislative Acts → 10 Initiatives → 10 Commissions

- ★ **Iowa Commonwealth Act (ICA)** — The CRC's Economic Engine  
CRC Central Hub & Online Portal, New Iowa Stock Market, Voucher Program, and the CRC Inventor's Guild
- ★ **Rural Iowa Revitalization Act (RIRA)**  
**Farmhire**, **Trail Trimmers**, and **RoadReady Iowa** initiatives
- ★ **Crop Diversity & Energy Sovereignty Act (CDESA)**  
**MycoFuel Engineers**, **SolarBerry Brigade**, and **Union Energy Works**
- ★ **Iowa's Right to Repair Act (IRRA)**  
**Iowa FryerForce** and **Biofuel Mechanics**
- ★ **Iowa's Right to Homestead Act (IRHA)**  
**Gardens Across Iowa!** and **Housing Helpers**
- ★ **The "Set the Captives Free!" Act**  
A supervised CRC work release program for reduced sentencing

---

## ★ 10 CRC Initiatives

5 Worker-Owned Cooperatives ("WOCs"), and 5 Workforce Development ("WFDs") led by Iowa Business Leaders

## ★ 10 Independent CRC Commissions

Statewide oversight, guidance, and support for each initiative

# 10 Initiatives to Choose From

## 5 Worker-Owned • 5 Workforce Development



**Worker-Owned Cooperative  
("WOC") Initiative**  
*Build Projects. Become Owners.*

---

Start with CRC funding and  
state support

Build roads, water systems,  
and community infrastructure

Earn ownership as projects  
succeed

Reinvest a small share into the  
Iowa Commonwealth Trust



**Workforce Development  
("WFD") Initiative**  
*Helps Iowa Businesses Grow.*

---

Iowa businesses become  
CRC-certified partners

Use CRC Vouchers to offset  
costs and hire workers

Select projects through the  
CRC Portal

Oversight and Support by an  
Official CRC Commission

Reinvest a small share into the  
Iowa Commonwealth Trust

**Both pathways keep wealth in Iowa and reinvest in our future.**



# Iowa Commonwealth Act — ICA

## A Strong Economic Engine for Iowa



### How Iowa rebuilds infrastructure and jumpstarts our economy:

- ★ **The CRC Central Hub**  
Where Iowans apply, invest, and launch projects
- ★ **The New Iowa Stock Market**  
Open to every Iowan to invest in CRC initiatives
- ★ **The CRC Voucher Program**  
Lowers costs and directly funds Iowa businesses and projects
- ★ **The CRC Inventor's Guild**  
Turn ideas into patented, market-ready products
- ★ **Iowa Commonwealth Trust**  
Funds schools, libraries, roads, bridges, healthcare, and community projects that help Iowans live sustainably

# New Iowa Stock Exchange™



## A New Engine to Drive Iowa's Economy



**Iowans can invest directly in renewing our infrastructure and economy:**

### **1.) Iowans can buy stock**

Across all 10 CRC initiatives, which include Iowa businesses.

### **2.) Stock pays for CRC Vouchers**

Vouchers help CRC-certified businesses cover equipment, expand hiring, and provide employee meals at Iowa restaurants.

### **3.) Dividends return profit to Investors**

Dividends return a share of profits to Investors as CRC projects succeed.

### **4.) A small micro-transaction tax (MTT) funds Iowa**

A small portion of each transaction goes to the Iowa Commonwealth Trust to support roads, libraries, schools, and healthcare for Iowans.

See Full Plan on [WildWillpower.org](http://WildWillpower.org)

# Wait... did you say... A New Iowa Stock Market??

Iowans can  
buy stock  
in CRC  
Initiatives



to fund CRC  
initiatives  
improving Iowa's  
Infrastructure.



Investments  
pay for  
CRC  
Vouchers



that reduce  
costs for  
the 10 CRC  
Initiatives.



CRC  
initiatives  
generate  
revenue.



Dividends  
are returned  
as profit to  
Investors.

This is how Iowans invest in our own future.

# A Small Micro-Transaction Tax

Helps fund The Iowa Commonwealth Trust

**When Iowans  
invest in  
CRC stock...**



*Why invest  
on Wall Street  
when you can  
invest in Iowa?*

**... a Micro-  
Transaction  
Tax (MTT)  
is applied....**



*A very small fee —  
similar to a sales tax,  
but on trades.*

**... helping fund the Iowa Commonwealth Trust:**

*Funds schools, libraries,  
roads & bridges,  
police & fire departments,  
and the  
New Iowa Healthcare Compact.  
The Trust is protected from political  
interference and reserved for Iowans.*



# The Iowa Commonwealth Trust

---



**Generate → Retain → Reinvest**

The Iowa Commonwealth Trust is a public investment fund owned by the people of Iowa. It keeps wealth in-state and reinvests it into healthcare, infrastructure, and economic growth.

## How It Works

### 1.) Iowa generates value

Through work, business growth, and innovation

### 2.) A portion stays in Iowa

Revenue flows into the Commonwealth Trust

### 3.) The Trust reinvests

Funding healthcare, infrastructure, and economic opportunity

*“The end of law is not to abolish or restrain,  
but to preserve and enlarge freedom.”*

— John Locke

**Instead of wealth leaving Iowa, it stays here—and works for you.**



# CRC Inventor's Guild™

## Turning Iowa Ideas Into Products and Ownership



### Helping Iowans transform ideas into products:

#### 1.) Iowans bring forward ideas

Inventors present concepts to the Guild, where experts help refine, validate, and prepare them for patent submission.

#### 2.) Ideas are developed and protected

The Guild provides tools, expert mentorship, and state-supported patent assistance—removing the financial barriers that prevent everyday Iowans from protecting their ideas.

#### 3.) Innovations move to market

Inventions are developed into real products—keeping ownership and wealth in Iowa.



# The Inventor's Guild's

---

## Iowa LegacyShare™ Pathway

Iowans have great ideas—but most never make it to market.

*Why? Patent protection is expensive.*

**The Inventor's Guild helps you:**

- 1.) Develop and patent your idea
- 2.) Build and refine your product
- 3.) Bring it to market at scale

In exchange, a small share (1–5%) of successful royalties returns to the Iowa Commonwealth Trust—funding future inventors—and strengthening Iowa's schools, infrastructure, and healthcare.

👉 No success → no cost.

👉 Success → a tiny fraction helps other Iowans.



**You own your patent. You keep your success. Iowans celebrate.**

Iowa: The "If You Build It" State

# Iowa LegacyShare™ Pathway

**A voluntary way to turn success into lasting impact.**

**LegacyShare makes it simple.**

**1.) You succeed**

You've built something meaningful.

**2.) You choose to give back**

Dedicate a small % of royalties to the Iowa Commonwealth Trust.

**3.) Your legacy lives on**

Your name, invention, and message are preserved for the future.

## **Legacy Recognition**

**— Honored in Legacy Hall**

Your name and invention become part of Iowa's story.

**— Your story lives on**

Shared in a video message to future generations.

**— Your impact grows**

Helping shape Iowa's future.



**What you build is yours. What you leave shapes the future.**

# **Civilian Restoration Corps**

## **Implementation, Stability, and Safeguards**

This section explains how the Civilian Restoration Corps (CRC) is implemented in a way that is stable, transparent, and protected from misuse. These systems are designed so the CRC works in practice—not just in theory.

---

### **1. Phased Rollout**

The CRC is launched in stages to ensure projects are successful, workers are supported, and funds are used responsibly.

#### **Phase 1 — Initial Launch**

- Focus on 3 core initiatives:
  - Roads and bridges repair
  - Water systems
  - Community gardens and food systems
- Immediate job creation through approved, ready-to-launch projects
- Opening of the CRC Portal for worker applications and project submissions

#### **Phase 2 — Expansion**

- Additional initiatives are launched based on performance and readiness
- Workforce development programs expand across the state
- Increased participation from Iowa businesses

#### **Phase 3 — Full Implementation**

- All CRC initiatives are active statewide
- Long-term infrastructure and economic reinvestment systems are fully operational

No initiative is launched until it meets the requirements outlined below.

---

### **2. Initiative Launch Requirements**

Each CRC initiative must meet minimum readiness standards before receiving full funding.

#### **Minimum requirements include:**

- Sufficient funding committed for launch

- A trained and available workforce
- Approved projects ready to begin
- Clear operational leadership and oversight

This ensures projects do not stall, waste funds, or overextend resources.

---

### **3. Investment Stability and Liquidity Protections**

The CRC includes safeguards to prevent instability, sudden sell-offs, or misuse of investment funds.

#### **What is liquidity?**

Liquidity means how easily an investment can be converted into cash.

#### **How the CRC maintains stability**

- Investments are structured to encourage long-term participation
- Early withdrawals may be reasonably limited during initial phases to protect system stability. These limits are structured to protect all participants and ensure the system remains stable during its early growth.
- A portion of funds is reserved to manage withdrawals and prevent disruptions

#### **Early Withdrawal Guidelines**

- Investors may withdraw funds during designated periods
- Large or rapid withdrawals may be limited during early phases
- Small early withdrawal fees may apply and are reinvested into the system

These safeguards prevent sudden losses of capital while still allowing flexibility for participants.

---

### **4. The Stability Reserve**

A portion of all investment activity supports a **Stability Reserve**.

#### **Purpose of the Stability Reserve:**

- Protect against sudden sell-offs
- Maintain steady funding for projects
- Ensure ongoing operations are not disrupted

This helps ensure the CRC continues functioning even during economic fluctuations.

This reserve functions similarly to stabilization funds used in financial systems to prevent sudden disruptions.

---

## 5. Voucher System Safeguards

CRC vouchers are used to support businesses, workers, and projects.

### To prevent misuse:

- Initial limits are placed on voucher usage
- Usage expands based on verified performance and need
- Large entities cannot dominate or absorb disproportionate resources
- All voucher activity is tracked and publicly reported

This ensures fair access and responsible use.

---

## 6. Loans and Initial Project Funding

The CRC may use loans or bonds to begin large-scale infrastructure projects.

### How this works

- Loans are used only for productive infrastructure (roads, water systems, etc.)
- Funds are directed into projects that generate long-term economic value
- Investment returns and economic growth contribute to repayment

### What this means

The CRC can begin work immediately while building long-term financial sustainability.

These are not open-ended debts—each loan is tied to productive infrastructure with clear repayment pathways.

---

## 7. Transparency and Oversight

The CRC is designed to be fully transparent and accountable to the public.

### Safeguards include:

- A public dashboard showing:
  - Projects
  - Jobs created

- Funds allocated and spent
  - Independent oversight to prevent fraud or favoritism
  - Standardized contracts across all initiatives
  - Regular public reporting and audits
  - Independent enforcement bodies, separate from program administration, ensure violations are investigated, rules are upheld, and corrective action is taken when necessary.
- 

## 8. The Iowa Commonwealth Trust — Protection and Use

Funds generated through CRC activities contribute to the Iowa Commonwealth Trust.

### **The Trust is:**

- Publicly managed and independently overseen
- Protected from misuse or diversion
- Dedicated to reinvesting in Iowa's future

### **Funds are used for:**

- Infrastructure
- Healthcare
- Education
- Public services

The Trust cannot be used to cover general budget shortfalls or diverted for unrelated political spending.

---

## 9. Designed for Long-Term Success

The CRC is not a short-term program.

It is built to:

- Create stable, high-paying jobs
- Rebuild Iowa's infrastructure
- Keep wealth in Iowa
- Reinvest in future generations

Every safeguard in this system exists for one reason:

**To ensure the CRC delivers real, lasting results for the people of Iowa.**

---

## **10. Initiative Commissions and Expert Governance**

Each Civilian Restoration Corps initiative is guided by a dedicated commission composed of qualified professionals with relevant expertise.

There are **individual commissions for each CRC initiative**, as well as an additional commission supporting the development of the Inventors Guild.

### **Purpose of Commissions**

These commissions ensure that each initiative:

- Is designed and implemented using real-world expertise
- Operates efficiently and responsibly
- Expands based on proven success, not speculation
- Maintains consistent standards across the state

### **Who Serves on These Commissions**

Each commission includes a combination of:

- Industry professionals with direct experience
- Business and management specialists
- Financial and accounting experts
- Workforce and operations leaders
- Field-specific experts depending on the initiative

### **Examples include:**

- Infrastructure engineers and project managers (roads and bridges)
- Water system specialists and environmental experts
- Horticulture professionals and master gardeners (Gardens Across Iowa)
- City planners and community development experts
- Entrepreneurship and business development graduates (Inventors Guild)

### **Selection and Terms**

Commission members are selected based on qualifications and experience, with clear standards for expertise.

Members serve fixed terms and are subject to performance review and removal for misconduct or conflicts of interest.

### **What the Commissions Do**

Each commission is responsible for:

- Establishing operational standards and best practices
- Defining project approval criteria
- Ensuring workforce readiness and training alignment
- Reviewing performance and improving systems over time
- Advising on expansion based on measurable success

### **Accountability and Transparency**

Commissions operate under clear public accountability standards:

- Decisions and guidelines are documented and publicly accessible
- Performance metrics are reported through the CRC public dashboard
- Conflicts of interest are prohibited and monitored. Violations result in removal and potential legal consequences.
- Oversight systems ensure decisions are made in the public interest

### **Why This Matters**

The CRC is not built on theory alone.

It is built with input from people who:

- Have done the work
- Understand the challenges
- Know how to deliver results

This ensures that each initiative is:

- Practical
- Scalable
- Grounded in real-world experience

This system is designed not just to start strong—but to remain strong, accountable, and effective for decades to come.

**There's only one way to make it happen:**

***Sondra Wilson  
for Iowa Governor*** 

To donate or help gather signatures to get Sondra on the ballot, please visit [WildWillpower.org](http://WildWillpower.org).

**Or, for Venmo or PayPal:**

Venmo = @Sondra-Wilson-777 with "SW4G" written in the memo

PayPal = [SondraWilson4Governor@gmail.com](mailto:SondraWilson4Governor@gmail.com)

**Thank you for your support!**

**"Heal the Heartland; Heal the World!"**

Visit [www.WildWillpower.org](http://www.WildWillpower.org) to get involved  
and **help change the future.**